

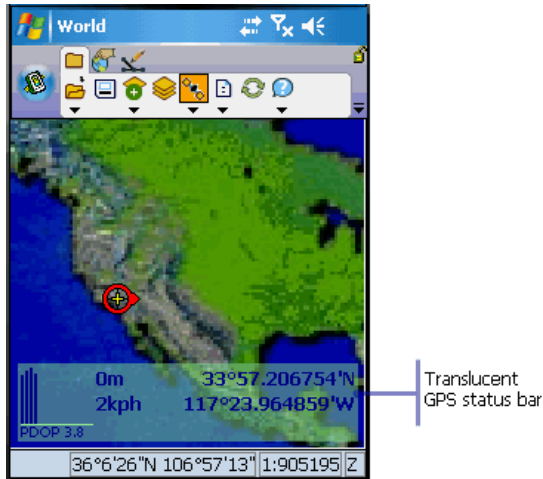


ArcPad Help

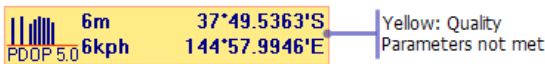
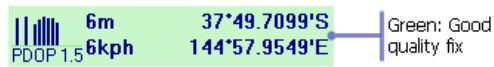


The GPS Status Bar

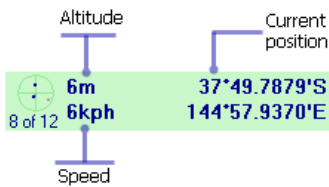
The GPS status bar is a translucent window that displays over the top of your map.



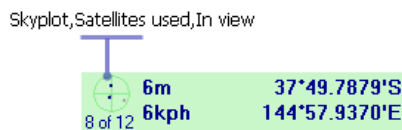
The background color of the GPS Status Bar indicates the current conditions of the GPS measurements according to the alerts that have been defined in ArcPad. A GREEN background indicates that the quality is acceptable according to the set alerts (alerts are set in the GPS properties dialog), YELLOW indicates that the quality parameters are not met, and RED indicates no fix.



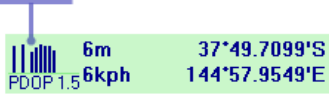
The GPS Status Bar also shows current position, current speed and altitude (if applicable).



On the left hand side, the graphical area cycles every few seconds to display skyplot and satellites alternately, signal strength and PDOP are displayed in view



Signal strength, PDOP



If a destination feature is selected in the map (either by using the Go To tool or by selecting features with the find tool), a compass, distance to the feature and bearing are displayed intermittently.

Compass, BRG and DST are displayed intermittently

